

## Collect Unlock Record With MF S70 card

### 1, Collect unlock records:

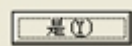
- 1). Stick the No. 1.2.3. on three MF S70 cards and then swipe No. 1 MF S70 card to the lock, lock with sound and light blue. Keep the card touching the lock until the lock sounds a long beep.
- 2). Then Swipe the No. 2 MF S70 cards to the lock, lock with sound and light blue. Keep the card touching the lock until the lock sounds a long beep.
- 3). Then Swipe the No. 3 MF S70 cards to the lock, lock with sound and light blue. Keep the card touching the lock until the lock sounds a long beep.

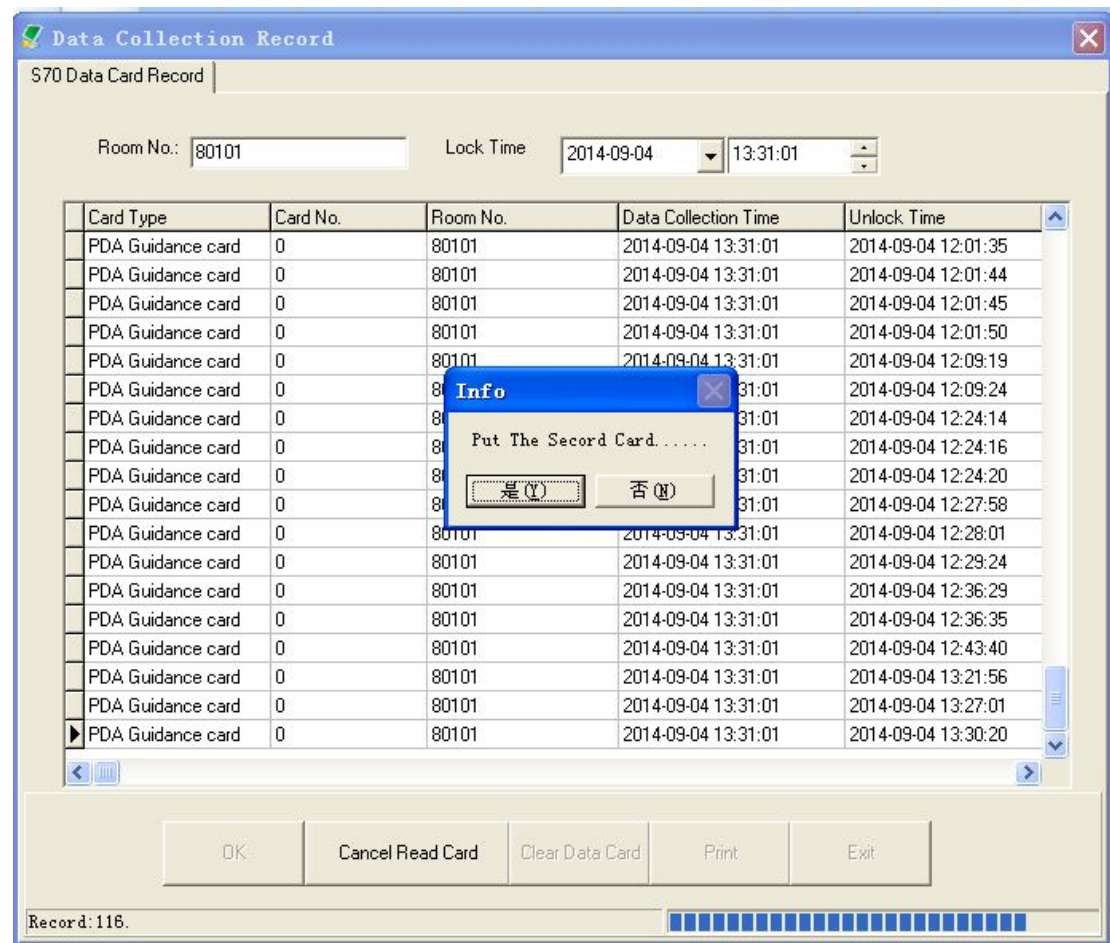
### 2, Read unlock records:


- 1)Log in the software, then click **Card Record**, select **S70 Data Card Record**.

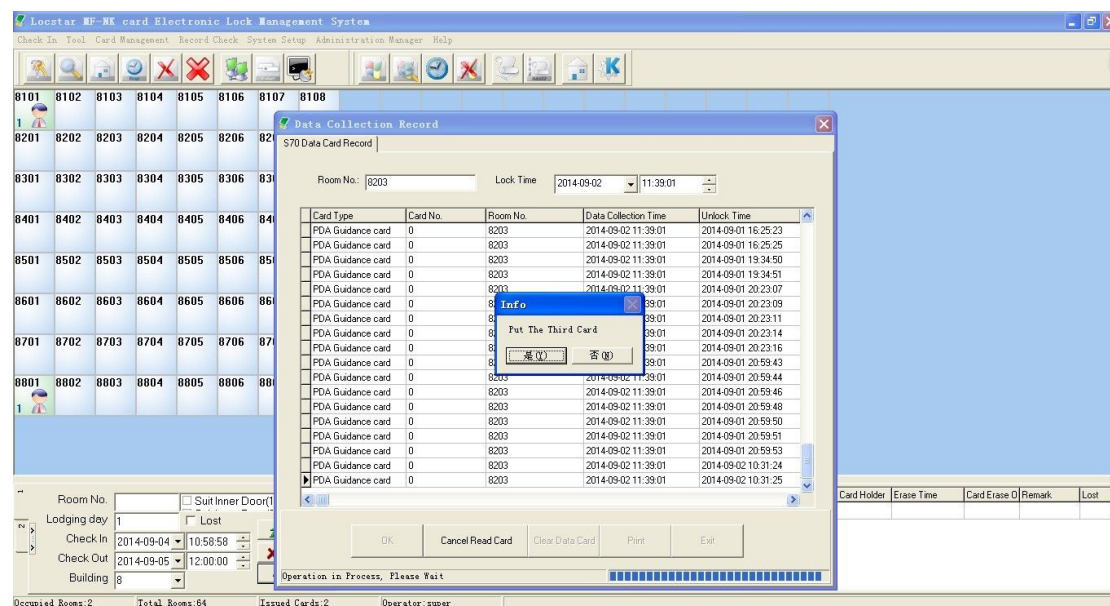
The screenshot shows a software window titled "Data Collection Record" with a sub-tab "S70 Data Card Record". The window contains the following elements:

- Room No.:** A text input field.
- Lock Time:** A date and time selection area showing "2008-03-15" and "15:23:02".
- Table:** A table with 5 columns: "Card Type", "Card No.", "Room No.", "Data Collection Time", and "Unlock Time". The table is currently empty.
- Buttons:** A row of five buttons at the bottom: "OK", "Cancel Read Card", "Clear Data Card", "Print", and "Exit".

2) Put No. 1 MF S70 card on the encoder and click **OK**, after get unlock records with No. 1 MF S70 card, it shows **Put The Second Card**, click Yes 



3) then put the No. 2 MF S70 card on the encoder and click **OK**, after get unlock records with No. 2 MF S70 card, it shows **Put The Third Card**, click Yes 



4) then put the No.3 MF S70 card on the encoder and click **OK** to get all of the unlock records successfully.

